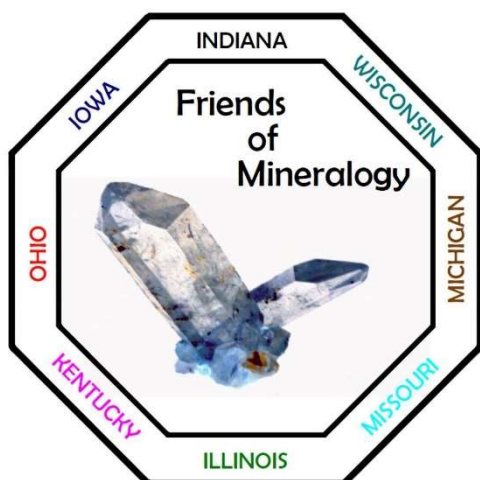


FRIENDS *OF* *MINERALOGY*

*Midwest Chapter Newsletter for
March – April 2019*



In this Issue:
President's Message – 2
Treasurer's Report – 6
MSHA Training Schedule – 7
7th Annual Symposium
Information – 9



Midwest Chapter President – Ken Bladh

Repeated from the December Newsletter

"In 2019 we expect to continue a broad distribution of regional business meetings and official chapter presence (information table) at mineral events in Michigan, Ohio and Indiana. **Please send me contact information for clubs in our region that would like an FM Midwest presence at their shows.**"

I have not received any requests. However, it is not too late. kbladh@wittenberg.edu

Summary of Annual Meeting of FM Board (Tucson - February 16th)

The Board concluded its business efficiently. Nominated and elected a slate of 4 new officers, announced the election results for new at-large Board members, awarded financial support to the 40th Annual New Mexico Mineral Symposium, and adopted a modified process for electronic distribution of the national newsletter. Specifics will appear in the next national newsletter. William Besse was elected president.

Report from Tucson

Wulfenite was loved this year at the international *Tucson Gem & Mineral Show*. World-class specimens from museums and private collections were on display. I only have space for a few personal highlights.

There is an excellent photo-journal of the TGMS show and satellite shows on *Mindat*

<https://www.mindat.org/article.php/2937/Tucson+2019>.

The University of Arizona Mineral Museum exhibited four large specimens that show the range of color and habit of wulfenite. Left to right: Defiance mine, Red Cloud mine, Rowley mine, Mammoth St-Anthony mine (Tiger) and Glove mine.



Rocks & Minerals devoted the January/February issue to wulfenite and I contributed an article full of photographs by Jeff Scovil of typical specimens from the most famous and some less-famous Arizona wulfenite specimen localities. I will give a 45-minute illustrated talk based on that article at our Symposium at Miami University on March 9th. There is secure display space if you have a wulfenite specimen to display.

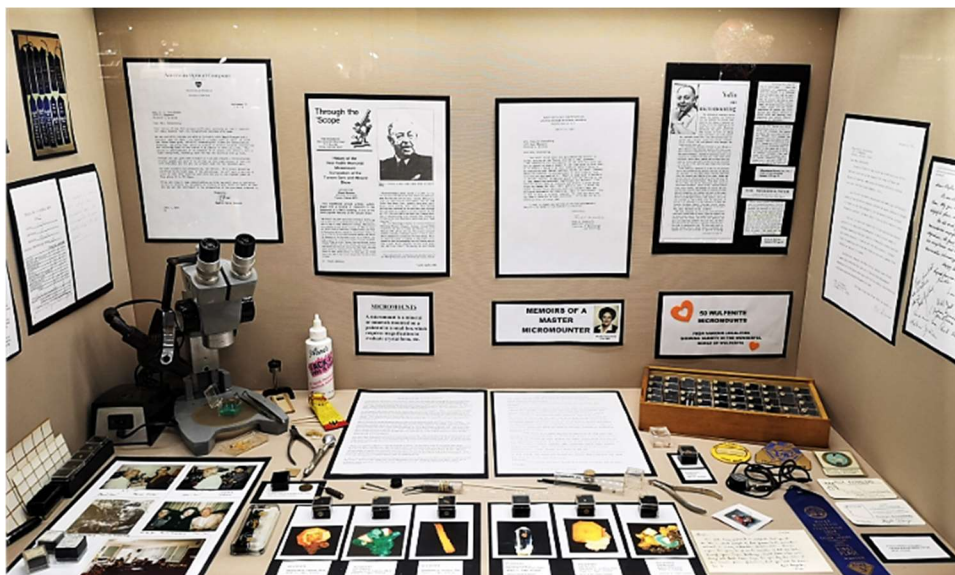
One case contained excellent crystals from the wulfenite locality closest to Tucson, the Old Yuma mine, now “protected from collectors” in the Saguaro National Monument.



This next photograph is a close-up of part of a larger exhibit. It shows two of the unusual colors and habits from the Glove mine (bottom left – black crystals and middle right- thick tabular) and a group from New Mexico (upper right corner) that looks like some of the material from the Glove and Defiance mines in Arizona. Upper left corner is typical from some specimens from Tiger and the lower right corner is typical Red Cloud color and habit, however, actually is from a different mine in the same district – the Pure Potential claim (North Geronimo mine).



TGMS treated collectors of micro-minerals to three excellent talks in the annual Arthur Roe Symposium, swap/trade sessions, and an open room with microscopes, free rough material and mounted specimens at very reasonable prices. I purchased four mounts of localities new to my collection. I'll try to include a photomicrograph of at least one of them in my talk at the Symposium. One display case on the main show area honored master micromounter Phyllis Sonnenberg.



An excellent display of the variety of crystal morphologies of fluorite from the Cookes Peak district, New Mexico was exhibited by Philip Simmons and Erin Delventhal. An article on this topic will appear in a *Rocks & Minerals* article later this year. This TGMS exhibit won an award from Friends of Mineralogy.



As a final personal comment on the TGMS, my article *The Crystal Systems: A Qualitative Visual Guide* was awarded the Best Article in *Rocks & Minerals* magazine for 2018 by Friends of Mineralogy National awards committee.

Seeking Loaned Specimens for the FoM Midwest Display at the Cincinnati GeoFair

Members can display one or a few of their choice specimens in a FM Club case at the Geofair in May. The Show theme is "colorful minerals". Contact me, Randy or Jeff and let one of us know the approximate size of the space to the case your specimen(s) will require. One of us will be available Friday evening during set-up and again Saturday morning before the show opens at 10am to help assemble the Club display. Specimens can be picked-up Sunday after the show closes or some other time by prior arrangement.

Seeking help on an Unusual Specimen from Ohio

I recently rediscovered this unusual specimen that I collected on a trip with my students in 1983 to Woodville Lime & Chemical quarry. The bladed crystals are celestite. What's unusual are the granular cylinders with hollow centers (tubes) intermixed with the blades of celestite. Have any of you seen this feature at this or other Midwest quarries?



I will have this specimen on display at the Symposium on March 9th.

I recommend an interesting article in the February issue of the online **digital EARTH magazine**

published by the American Geosciences Institute. How to opt-in to this digital publication (FREE to FM members) was explained in the November-December Newsletter.

Travels in Geology: **MID-OCEAN VOLCANIC EXCURSION: The Calderas and Caldeiras of the Azores.** This feature article contains lots of great photographs and text that describes the geology of these islands, its distinctive landforms, spectacular hikes to geothermal hot springs and mineral waters and lava tubes. There is even a local culinary specialty called *cozido* (a heaping pile of meat and vegetables) cooked by geothermal heat in deep pits. If nothing else this read is a nice escape from winter in the Midwest.

MSHA collecting safety training at Wittenberg (Springfield)

I look forward to seeing some of you at on March 23 (Saturday) for this excellent refresher course on collecting safety led by Scott Kell. Same building as past years. The room is one floor above the space we have used before and will accommodate 50 participants. Consequently, the first 50 registrants can be accepted. Hot coffee and tea will be provided. There are no vending machines on campus.

president@fommidwest.org

Treasurers Report

Treasurer@fommidwest.org

2019 dues of \$20.00 are due no later than March 1, 2019!

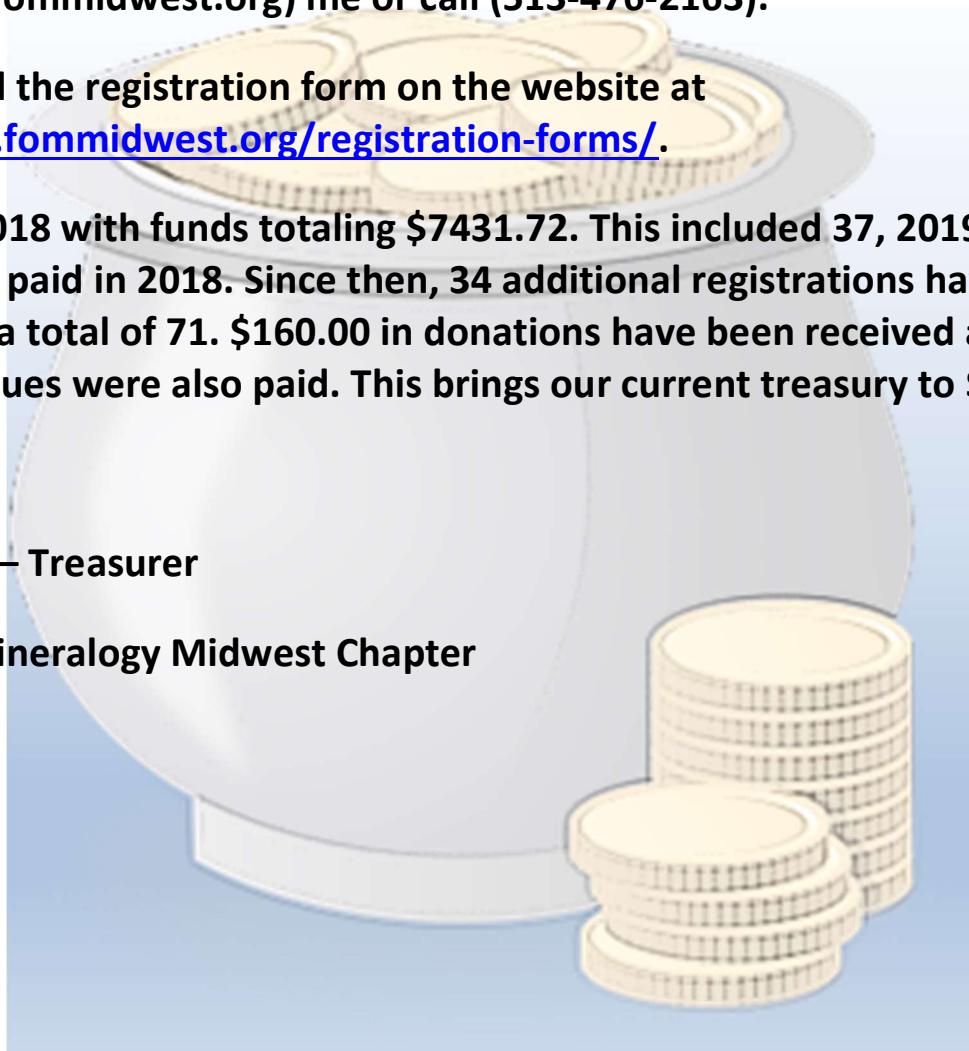
If you have any questions as to your status, please email (treasurer@fommidwest.org) me or call (513-476-2163).

You may find the registration form on the website at <http://www.fommidwest.org/registration-forms/>.

We ended 2018 with funds totaling \$7431.72. This included 37, 2019 registrations paid in 2018. Since then, 34 additional registrations have been received for a total of 71. \$160.00 in donations have been received and \$212.00 in National dues were also paid. This brings our current treasury to \$8064.72.

Jeff Spencer – Treasurer

Friends of Mineralogy Midwest Chapter



MSHA Training Schedule

It is once again time to take MSHA refresher training so that you can participate on all of this year's upcoming field trips.

Springfield:

Scott Kell will be giving his collector-specific training on **Saturday, March 23, from 9:00 AM -2:00 PM** in the **Barbara Deer Kuss Science Center at Wittenberg University, Springfield, Ohio**. If you are using your GPS, the **street address is 315 Bill Edwards Drive, Springfield, OH**. Parking is available directly across the street from the Science Center. Signs will be posted on the doors of the Science Center to guide you regardless of what door you come in. I have been told by our host, Ken Bladh, that we are one floor up in a smaller room (holds 50) this year.

Please respond and let Randy Marsh know if you plan to attend. This will help to create a sign-in sheet for attendees.

Coffee will be available. Please consider bringing some snacks/drinks for yourself and others to enjoy. **WE ARE NOT BREAKING FOR LUNCH** so please come prepared for this if you cannot wait for food.

This event is **free**. Students are welcome to attend. Most quarries do not let people under 18 into them.

Please contact Randy Marsh to register - vpprograms@fommidwest.org

Columbus:

Saturday April 27, 2019, 9:30 am - 1:30 pm (or till Scott is done); no lunch break will be involved, so bring something to eat. The class will be taught at the ODNR, 2045 Morse Road. From I71, exit 116, Morse Road drive east for about 1.5 miles; get off of Morse Road at the Turkey Hill Gas Station on your right; about 0.2 miles later you will turn right (south) on Fountain Square. Drive up to the security guard shed and get a visitor's pass. After obtaining your pass, drive SSE toward Building E and park. The course is in the first floor lecture hall. Parking as well as the course are both free.

Please contact Reggie Rose to register - vpfieldtrips@fommidwest.org



Sphalerite – Genoa Quarry

Dear Mineral Colleague -

I am pleased to announce that our 7th annual symposium will be on **Saturday, March 9, 2019** at Miami University in Oxford, OH. Details of the event are included below.

If you have specimens that you would like to display to help enhance the event for everyone, please contact me and I will assist you with this. Specimens that touch on one of the presented topics or that represent something collected in the field are suggestions to consider. Other specimens are welcome.

Please pay attention to the parking permits required at Miami University. Instructions are below.

There is **no registration** for this event, and there is **no fee to attend**. Donations to the Chapter are always welcomed and can be made via our website (www.fommidwest.org) or at the event.

Feel free to contact me with any questions.

Cheers,

Randy



Friends of Mineralogy Midwest Chapter 7th Annual Mineralogical Symposium

Hosted by the Miami University Karl E. Limper Geology Museum

DATE: Saturday March 9, 2019

TIME: 9:00 AM – 4:30 PM

LOCATION: 152 Shideler Hall (Spring Street & Patterson Ave), Miami University, Oxford, OH

CONTACTS: Randy Marsh (vpprograms@fommidwest.org or 513-515-7890)

Ken Bladh (president@fommidwest.org or 937-390-1742)

STATEMENT OF PURPOSE: FM's objective is to promote, support, protect, and expand the collecting of mineral specimens, while furthering the recognition of the scientific, economic, and aesthetic value of minerals and mineral collecting. The purpose of the symposium is to bring together professional and amateur mineral enthusiasts to share information of common interest, to build a local mineralogical community and to provide students with an opportunity to share their work and receive public recognition for it.

DETAILED AGENDA:

- 9:00-9:30 FM Midwest Chapter Meeting (open to all)
- 9:30-10:30 *Dr. Steve Chamberlain*¹: **Balmat, NY: An Under-Appreciated Classic Locality**
- 10:30-11:15 *Dr. Ken Bladh*²: **Arizona Wulfenite**
- 11:15-12:00 *Dr. John Medici*³: **Some Auglaize Quarry Mineral Collecting, 1968 to Date**
- 12:00-1:00 Lunch Break Armstrong Student Center, Museum Viewing and Lunar Meteorite Viewing
- 1:00-1:30 *Dr. Claire McLeod*⁴: **General Mineralogy of the Moon**
- 1:30-2:15 *Johan Maertens*: **The Mineral Ice: Collecting Frost Crystals**
- 2:15-3:00 *Dr. John Rakovan*⁵: **Forensic Mineralogy: Examples in Silver and Gold**
- 3:00-4:00 Student Talks (20 min each, in order outlined on next page)
- 4:00-4:15 Break
- 4:15-4:30 Awards for Student Talks

¹ *Dr. Steve Chamberlain is the Coordinator, Center for Mineralogy, at New York State Museum. He is a prolific collector of New York state minerals. Steve was chairman or co-chairman of the Rochester Mineralogical Symposium from 1986 to 2018.*

² *Dr. Ken Bladh is President, Friends of Mineralogy Midwest Chapter. He is Emeritus Professor of Geology at Wittenberg University and editor of the MSA Handbook of Mineralogy.*

³ Dr. John Medici is an American Chemical Society emeritus Chemical Abstracts retiree (Biochemistry/Food/Nutrition editor-translator) with extensive field collecting travels in over half of the 50 US states and several provinces in Canada.

⁴ Dr. Claire McLeod is an Assistant Professor of Petrology and Geochemistry at Miami University. Her research involves looking at the mineralogical make up of returned Apollo samples and lunar meteorites in order to evaluate the geological history of the Moon.

⁶ Dr. John Rakovan is a Professor of Mineralogy at Miami University and an executive editor of Rocks & Minerals.

STUDENT TALKS:

1. AN “ORDINARY” MINERAL FROM AN EXTRAORDINARY LOCALITY: FLUORAPATITE FROM MONT SAINT-HILAIRE

J. Caleb Chappell, J.F. Rakovan, A. Sommer, B. Phillips, L. Horváth, and E. Horváth

Department of Geology and Earth Science, Miami University, Oxford, OH

2. INTERESTING INCLUSIONS IN GREEN MUSCOVITE FROM THE MERELANI HILLS, TANZANIA

John Fink¹, Chris Emproto¹, John A. Jaszczak², and John Rakovan¹

¹Department of Geology and Environmental Earth Science, Miami University, Oxford, Ohio

²Department of Chem and the A. E. Seaman Mineral Museum, Michigan Tech University, Houghton, Michigan

3. CARBONATE-HOSTED APATITE FROM THE GRENVILLE PROVINCE

Chris Emproto, John Fink, and John Rakovan

Department of Geology and Environmental Earth Science, Miami University, Oxford, Ohio

ADDITIONAL PRESENTATIONS by KEYNOTE SPEAKER: Dr. Steve Chamberlain will be giving an additional talk at the Cincinnati Mineral Society meeting on the evening of Friday, March 8, 2019. Contact Terry Huizing at tehuizing@fuse.net for further details or visit the CMS website (mineralsociety.org).

DIRECTIONS and PARKING: The Limper Geology Museum is located on the Miami University campus just inside the East and West entrances to Shideler Hall on the first floor. Shideler Hall is located west of the intersection of US Highway 27 and State Route 73. See map on following page.

Recommended parking is in Cook Field lot near the bell tower across the road from Shideler Hall. Parking requires the purchase of a permit. Please visit <http://www.miamioh.edu/parking/permits/index.html>, select Visitors, and then click Purchase Visitor Permit. You will need to display this permit on your dashboard the day of the event. Cost is \$3.

You may also obtain permits from John Rakovan inside the auditorium on the day of the symposium. You will need cash. You will have to walk back to your vehicle to display the permit.

+ Current Students, Faculty, and Staff

+ Departments and Offices

+ Contractors and Vendors

Visitors

Parking for visitors may or may not require a permit. See the information below for parking restrictions.

Permit Required

- At all times for University surface lots (except for Special Events, see below)
- From 7 a.m. to 6 p.m., Monday through Friday, on Spring, Oak and Maple Streets

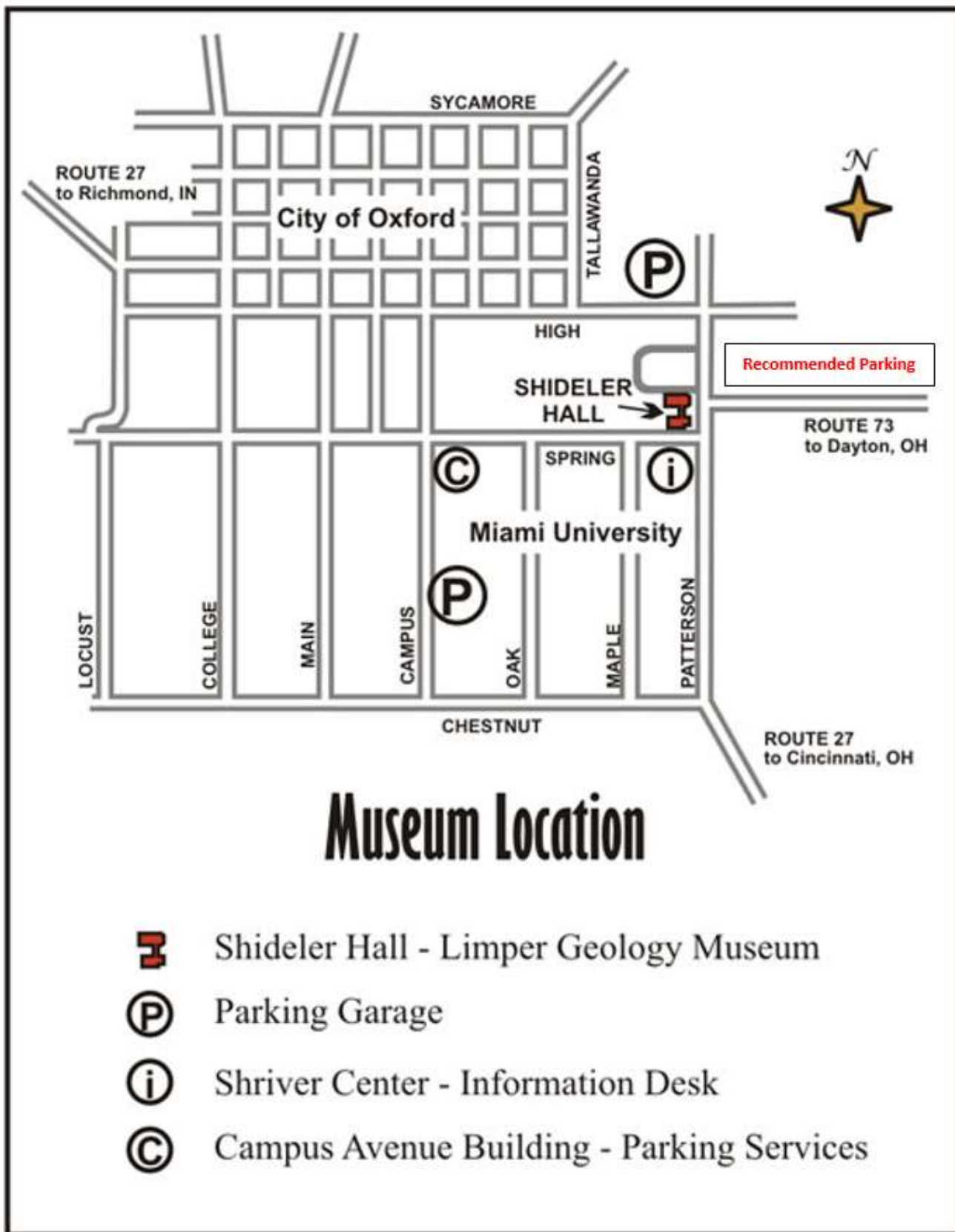
Permit Not Required

- Any parking meter
- Campus Avenue Garage (hourly rates and event parking rates apply)
- North Campus Garage (hourly rates and event parking rates apply)
- Every day from 6 p.m. and 7 a.m. on Spring, Oak, and Maple Streets
- Between noon Friday and 10 p.m. Sunday on weekends of home football games

Purchase a Permit

Visitors may purchase a permit at the HOME Office during business hours or online for \$3 per day. Registration requires the license plate number, make, model, and color of the vehicle to be registered. Students and contractors are NOT permitted to purchase visitor permits.

[Purchase Visitor Permit »](#)



2019 Officers

President - Ken Bladh, 132 East 2nd St.

Springfield, Ohio 45504

(937)390-1742 president@fommidwest.org

Vice President Programs –Randy Marsh, 6152 Old Stone Ct.

Hamilton, Ohio 45011

(513)515-7890 vpprograms@fommidwest.org

Vice President Field Trips - Reggie Rose, 4287 Parkmead Dr.

Grove City, Ohio 43123

(614)875-2675 vpfieldtrips@fommidwest.org

Secretary – Frank Konieczki, 50355 W. Huron River Dr.

Belleville, Michigan 48111

(734)-699-3321 secretary@fommidwest.org

Treasurer - Jeff Spencer, 4948 Beechwood Road

Cincinnati, Ohio 45244

(513)248-0533 treasurer@fommidwest.org

Liaison Officer – Clyde Spencer, 1858 Robin Hood Dr.

Fairborn, Ohio 45324

(937) 878-9988 liaisonofficer@fommidwest.org

Fund Raising (Committee Chair) - Vacant

Newsletter (Committee Chair) Tom Bolka, 2275 Capestrano Dr.

Xenia, Ohio 45385

(937)760-6864 newsletter@fommidwest.org

Newsletter published bi-monthly in January, March, May, July, September and November. Please submit all information for publication in the newsletter by the 15th of the previous month.

Chapter Website:

www.fommidwest.org

National Website:

www.friendsofmineralogy.org

On the Cover –

Ametyst – freeware

Affiliations:

THE MINERALOGICAL RECORD
THE MINERALOGICAL SOCIETY OF AMERICA
AMERICAN GEOSCIENCES INSTITUTE
MINERALOGICAL ASSOCIATION OF CANADA
ROCKS & MINERALS MAGAZINE
MINERAL NEWS
MINDAT

Our purpose is to organize and promote interest in and knowledge of mineralogy; to advance mineralogical education; to protect and preserve mineral specimens and promote conservation of mineral localities; to further cooperation between amateur and professional and encourage collection of minerals for educational value; and to support publications about mineralogy and about the programs of kindred organizations.

