



# NEWSLETTER

of the INDIANA CHAPTER, FRIENDS OF MINERALOGY, INC.

Volume V: No. 2

March 1991

**SECOND FM MEETING OF 1991, NOTE CHANGE IN TIME AND PLACE!!**

## FOSSIL FLING, BROOKVILLE RESERVOIR

by  
Dr. Jon Branstrator  
Ray Dickerson

Saturday, March 9, 1991  
Basement Mounds Recreation Office  
Brookville Reservoir

### March Meeting Announcement

Hal Roepke has arranged another hands-on meeting for Saturday, March 9, 1991. Note the new time and date. We will go on a "fossil fling" that was arranged by Ray Dickerson for the Brookville Reservoir area. Dr. Jon Branstrator, professor of geology at Earlham College, Richmond, Indiana, will present a talk about fossils with emphasis on fossil mineralogy, beginning at 10:00 a.m. at the basement of the Mounds Recreation Office off Scenic Drive west of State Route 101 about 8 miles south of Liberty. A map is enclosed. Drinks will be provided but bring a sack lunch. Fossil collecting in the Brookville area will begin after lunch and last until about 4:00 P.M. Some new cuts are rumored to have become available. The location is very close to Richmond where the first of this year's mineral shows is underway March 8 to 10. An announcement for that show is also enclosed. This meeting should allow a nice chance to visit the Richmond Show in addition to getting out and collecting with the help of Dr. Branstrator. A long-standing professional commitment prevents me from attending the talk but I hope to be there for the collecting. Dr. Roepke will chair a short business meeting. I hope you can all come.

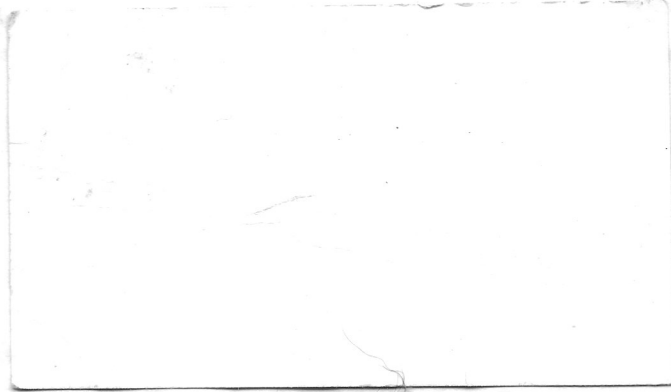
Please remember to pay your 1991 dues. Dues are \$17.00 (\$10.00 for additional member of the same family). Dues include chapter and national dues, newsletters, insurance, field trip updates, speakers, etc.

### Purposes of the Indiana Chapter:

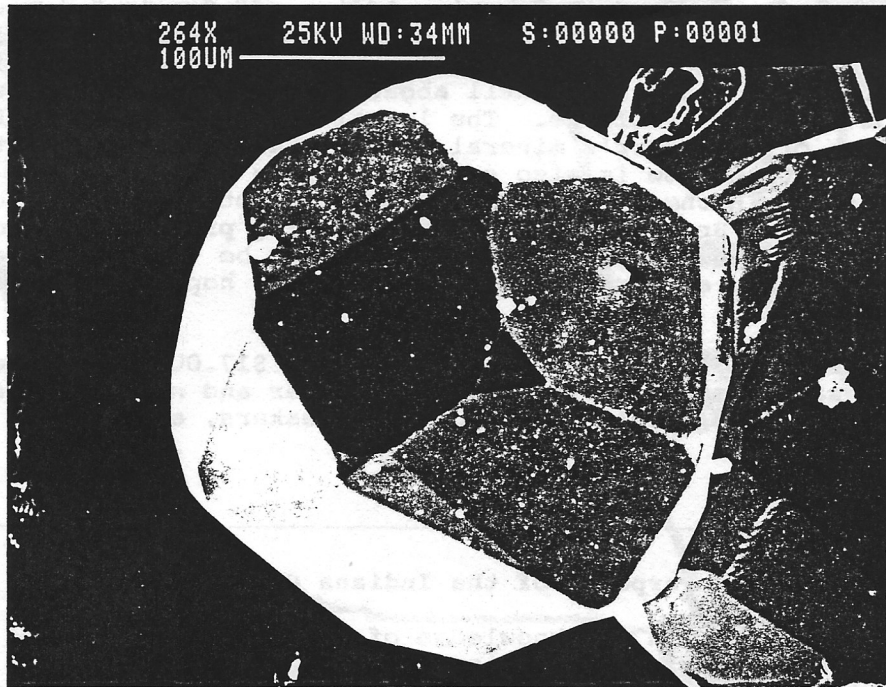
1. To promote interest in and knowledge of mineralogy.
2. To advance mineralogical education.
3. To protect and preserve mineral specimens and promote conservation of mineral localities.
4. To further cooperation between amateur and professional and encourage collection of minerals for educational value.
5. To support publications about mineralogy and about the programs of kindred organizations.

NEWSPLETTER

OF THE INDIANA CHAPTER, FRIENDS OF MINERALOGY, INC.



INDIANA CHAPTER,  
FRIENDS OF MINERALOGY, INC.  
c/o Nelson Shafter  
611 N. Walnut Grove Ave.  
Bloomington, IN 47405



SEM photo of Duff Ohio pyrite from January meeting.

# GEM and MINERAL SHOW

MARCH 8, 9, 10, 1991

FRIDAY AND SATURDAY 9 - 8 SUNDAY 12 - 5  
(SCHOOL CHILDREN FROM 9 - 3 ON FRIDAY)

**KUHLMAN CENTER**

Wayne County 4-H Fairgrounds

North Salisbury Road

**RICHMOND, INDIANA**

— DEALERS —

Hinshaw's Rock 'N Gems  
French Lick, IN

Touchstone Minerals  
Richmond, IN

Gems by Hollingsworth  
Richmond, IN

Archy's Rock Shop  
Mason, MI

Lynco  
New Ross, IN

No. American Minerals  
Baraga, MI

Jox Rox  
Indianapolis, IN

LaMont's Rockpile  
Brookville, IN

Bernie's Gems  
Trafalgar, IN

Andria Bree  
El Cajon, CA

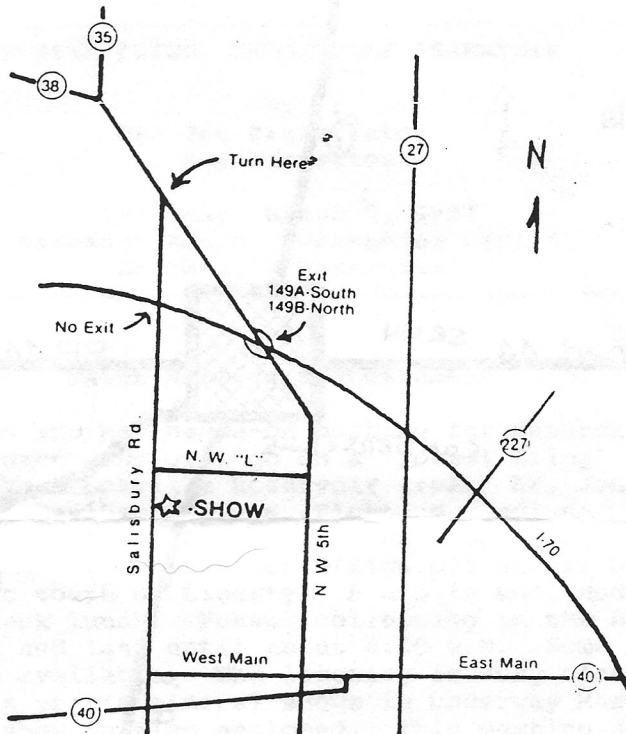
**DISPLAYS**

**CLUB BOOTH**

**SILENT AUCTIONS**

**DEMONSTRATIONS**

**PROGRAMS**



Fri. 7:00 pm - "Moroc", a film of the Minerals of Morocco  
Sat. 2:00 pm - "Continental Glaciation in Indiana", a slide-  
lecture by John R. Hill, Glacial Geologist,  
Indiana Department of Natural Resources

3:30 pm - "Gems of the 90's" by Tony Detrick,  
Graduate Gemologist, GIA, Grandson  
of the late Vince Detrick

Sun. 2:00 pm - "Gems of the 90's" by Tony Detrick (see above)  
3:00 pm - "Moroc" (see above)

Sponsored by

**EASTERN INDIANA GEM & GEOLOGICAL SOCIETY, INC.**

DONATION: ADULT \$1.50

CHILD (5-12 yrs.) 50¢

— FURTHER INFORMATION —

Call: (317) 855-3683  
(317) 935-6368

Chairmen:

Al Vernon  
Bob Vetter

**GOOD FOOD AVAILABLE**



# DIRECTIONS TO "FOSSIL FLING"

